



TRIP SPACE

TECHNICAL PACK

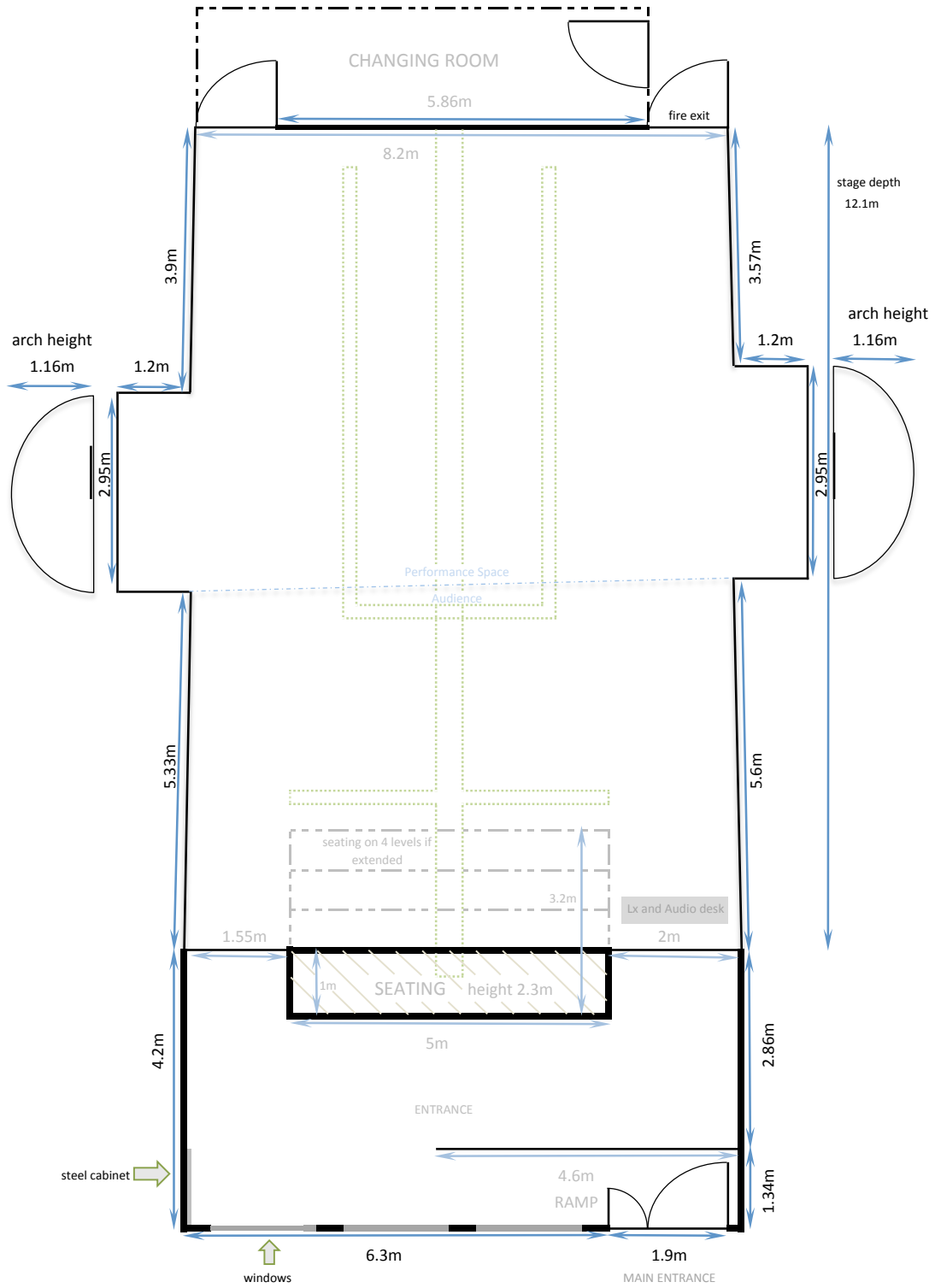
- 1 __ SPACING DIAGRAM
- 2 __ TECHNICAL DIAGRAM
- 3 __ DEFAULT LIGHTING SET-UP
- 4 __ LIGHTING UNITS
- 5 __ DEFAULT PATCHING

CONTACT:




TECHNICAL: MICHAEL PICKNETT - MIKE@TRIPSPACE.CO.UK

PRODUCTION: GIULIANA MAJO - GIULIANA@TRIPSPACE.CO.UK

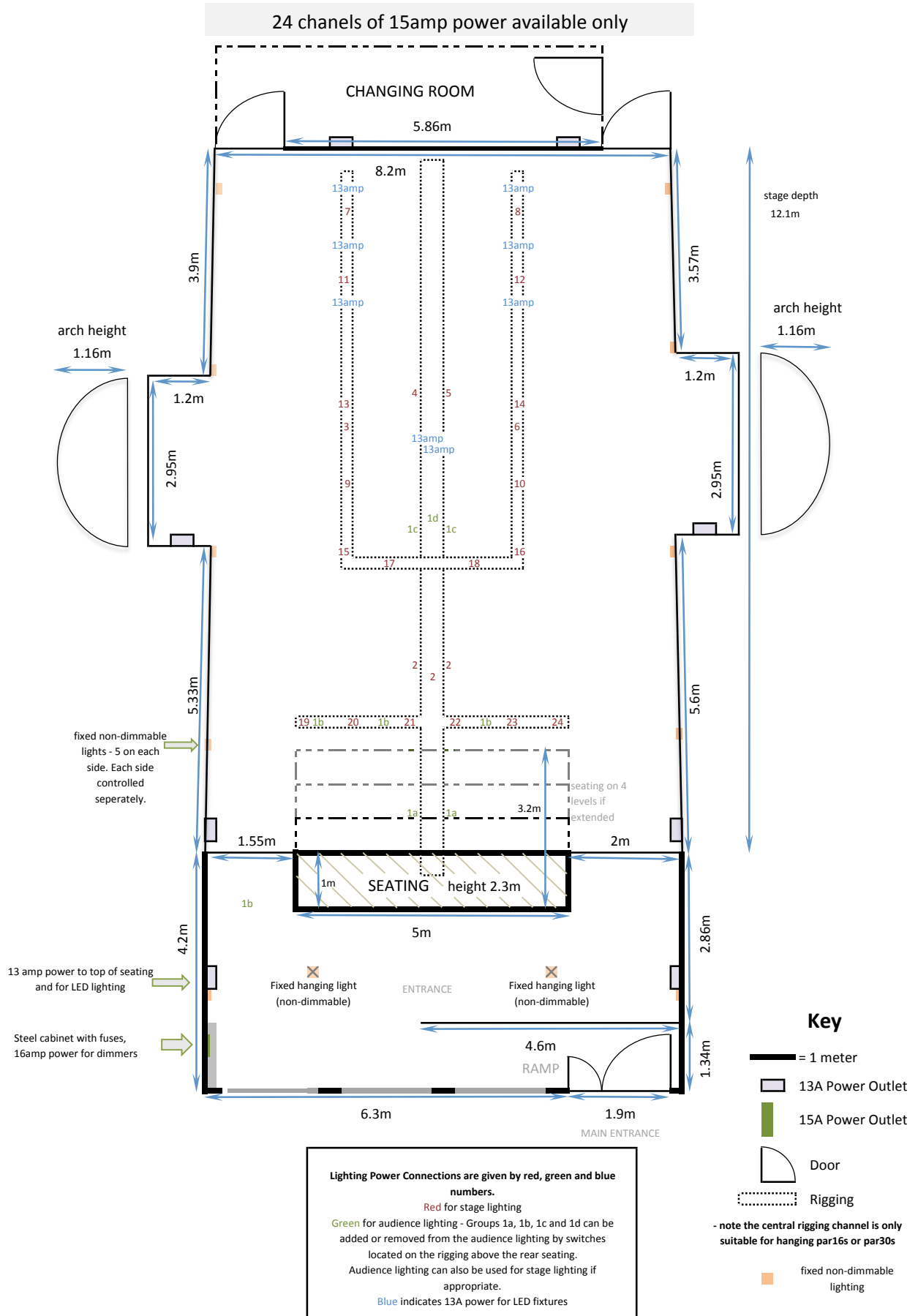
Trip Space Spacing Diagram



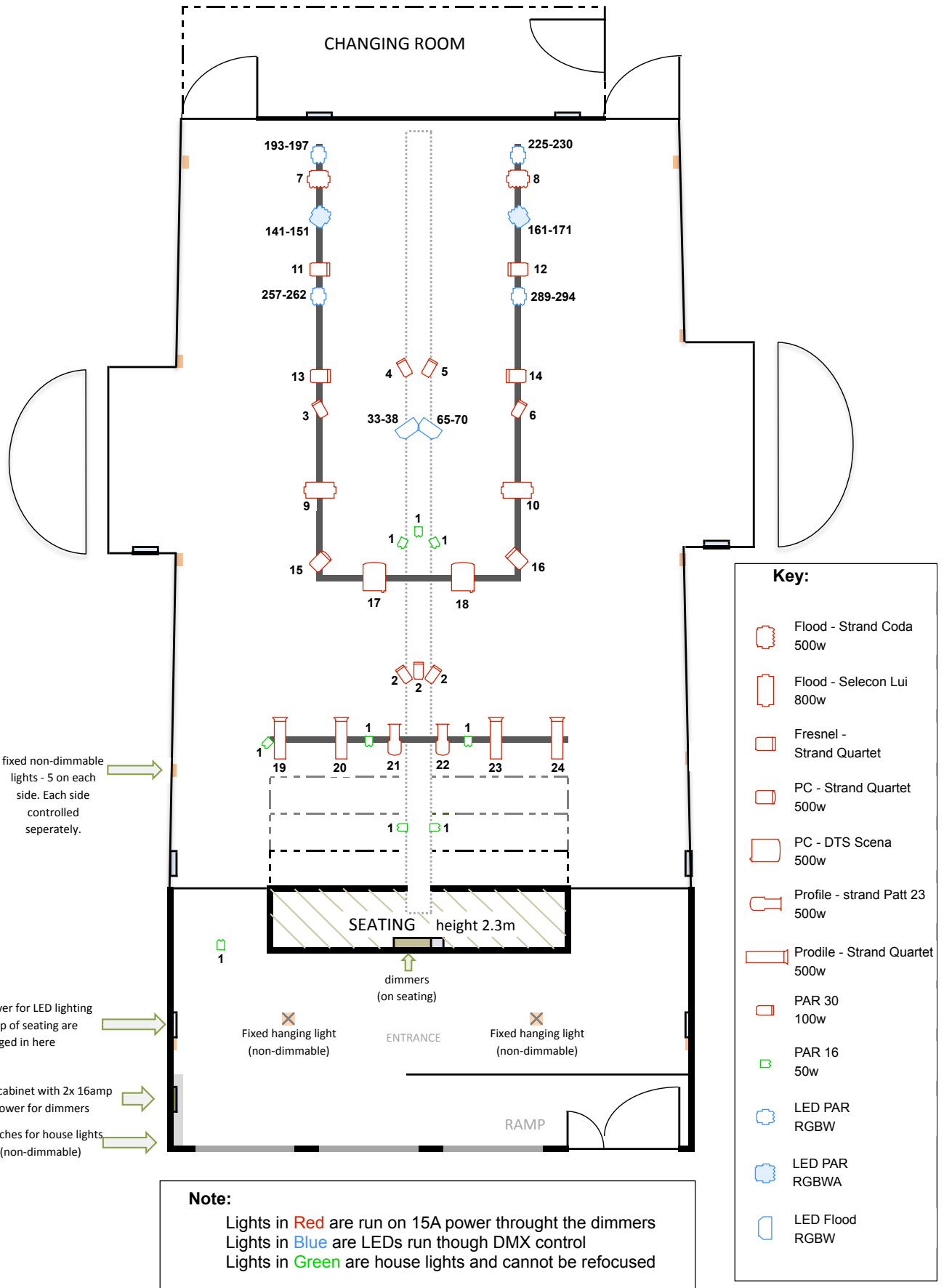
Key

-  = 1 meter
-  Door
-  Rigging

Trip Space Technical Diagram and Lighting Channel Rig



Trip Space Default Lighting Set-up



**Please note that our rig is very limited, but we will do our best to make things happen well.
When planning your lights, please consider the following:**

- Three of our dimmers are rated to take a maximum total of **3500W** (each dimmer has 6 channels)

- The fourth dimmer is rated to take a maximum total of **2800W** (this dimmer also has 6 channels)

- The hanging LED fixtures can be moved between the six hanging points (see the channel rig diagram, but due to the nature of the units, it is not always possible to move them to other parts of the rig.

- The central channel is only suitable for hanging PAR 15 and 30 units, it is not designed as a lighting bar

- We often need to use the same rig to light several pieces in an evening - so not all the units will be available to you. The more we know in advance, the more we can plan. But we cannot guarantee a re-rig between pieces.

- We do not usually have a pre-rig time allotted, so if your technical set-up requires one, please contact the TripSpace team.

Lighting Units

Profiles	Patt 23	500W	6 Units available
	Strand Quartet 22/40	500W	4 Units available
PCs	DTS Scena	500W	2 Units available
	Strand Quartet	500W	1 Unit available
Floods	Philips Selecon Lui (Asymmetric)	800W	2 Units available
	Strand Coda 500/1 (Asymmetric)	500W	2 Units available
Fresnel's	Strand Quartet	500W	5 Units available
Par Cans	PAR 30	100W	9 Units available
	PAR 15	50W	2 Units available
LEDs	Floods RGBW	75W	2 Units available
	ADJ Hex PAR 12 RGBWA-UV	150W	2 Units available
	PAR 36 RGBW	60W	4 Units available
	ADJ Hex PAR 3 RGBWA-UV*	30 W	2 Units available

* used as floor lights

Audience Lights are (9x par 16s 50W each, 50° angle bulbs).

These can be used, but not re-rigged or re-focussed unless pre-planned in consultation with the TripSpace team.

Dimmer A - 13Amp (yellow)			
DMX channel	Dimmer Channel	Unit	Power
1	1	Audience	450W (total)
2	2	DS Centre Cluster	300W (total)
3	3	Upstage SR	100W
4	4	Upstage Centre SR	100W
5	5	Upstage Centre SL	100W
6	6	Upstage SL	100W

Dimmer B - 16Amp (Blue)			
DMX channel	Dimmer Channel	Unit	Power
7	1	USL Coda Flood	400W
8	2	USR Coda Flood	400W
9	3	DSR Lui Flood	800W
10	4	DSL Lui Flood	800W
11	5	Upstage SR Fresnel	500W
12	6	Upstage SL Fresnel	500W

Dimmer C - 16Amp (Red)			
DMX channel	Dimmer Channel	Unit	Power
13	1	Midstage SR Fresnel	500W
14	2	Midstage SL Fresnel	500W
15	3	Downstage SR PC	500W
16	4	Downstage SL PC	500W
17	5	Downstage CSR PC	500W
18	6	Downstage CSL PC	500W

Dimmer D - 16Amp (Green)			
DMX channel	Dimmer Channel	Unit	Power
19	1	SR profile	500W
20	2	SR mid profile	500W
21	3	SR Centre profile	500W
22	4	SL Centre profile	500W
23	5	SL mid profile	500W
24	6	SL profile	500W

LED PAR lighting

DMX channel	control	Unit
193	Intensity	PAR 36 Up Stage Right
194	Strobe	
195	Red	
196	Green	
197	Blue	
198	White	
225	Intensity	PAR 36 Up Stage Left
226	Strobe	
227	Red	
228	Green	
229	Blue	
230	White	
257	Intensity	PAR 36 Mid Stage Right
258	Strobe	
259	Red	
260	Green	
261	Blue	
262	White	
289	Intensity	PAR 36 Mid Stage Left
290	Strobe	
291	Red	
292	Green	
293	Blue	
294	White	

LED PAR 12 lighting

DMX channel	control	Unit
141	Red	PAR (ADJ 12) Stage Right
142	Green	
143	Blue	
144	white	
145	Amber	
146	U.V.	
147	Intensity	
148	Strobe	
150	Sound	
151	Sound control	
161	Red	PAR (ADJ 12) Stage Left
162	Green	
163	Blue	
164	white	
165	Amber	
166	U.V.	
167	Intensity	
168	Strobe	
170	Sound	
171	Sound control	

LED Floor lighting

DMX channel	control	Unit	
97	Red	Floor PAR (ADJ 3) Stage Right	
98	Green		
99	Blue		
100	White		
101	Amber		
102	U.V.		
103	Intensity		
104	Strobe		
129	Red		Floor PAR (ADJ 3) Stage Left
130	Green		
131	Blue		
132	White		
133	Amber		
134	U.V.		
135	Intensity		
136	Strobe		

LED Flood lighting

DMX channel	control	Unit
33	Red	Flood Stage Right
34	Green	
35	Blue	
36	White	
37	Intensity	
38	Strobe	
65	Red	Flood Stage Left
66	Green	
67	Blue	
68	White	
69	Intensity	
70	Strobe	

House lights

fixed & non-dimmable

10 wall mounted lights

(5 on each side - 4 of which on stage)
left and right independently operated

Working Lights

Fluorescent lights ceiling mounted
(all lights linked)

Entrance lights

2 hanging domestic lights (linked)

We use LX Console to run our lights through a 5-pin DMX dongle
We also have a midi fader desk to run sub-masters
We also have a Strand 100 plus 12/24 lighting Desk